



BioPure fluid path components,  
connect with confidence





## About BioPure

BioPure has pioneered the design, development and delivery of innovative bioprocessing fluid path components since 1998.

Our strong market focus, aligned with a global presence, ensures BioPure will continue to be the market leader in single-use technology for many years.

As part of the Watson-Marlow Fluid Technology Group (WMFTG), we have combined market expertise in all aspects of fluid transfer; from pumps and tubing, to valves, reinforced hoses and final fill finish. Always on the leading edge of meeting regulatory expectations, we are confident that no other company can handle high purity biopharmaceutical fluid application better than WMFTG.

## Full validation and traceability

BioPure aims to simplify your production operations, lower cGMP manufacturing costs and reduce process validation.

- » LOT traceability on every component
- » Class 7 cleanroom manufacturing and packing
- » Use of automated technologies including advanced robotics
- » Continuous improvement of manufacturing procedures utilising global initiatives
- » All components and materials contain no animal derived content

All products are supported by validation guides detailing test protocols including ISO, USP and extractables.

This enables our customers to quickly assess our component suitability for their manufacturing process.

Biopharmaceutical applications are amongst the most critical in the world. You need a partner who you can trust, who understands the process and is able to help achieve compliance and repeatability throughout.

## BioPure fluid path components allow you to connect with confidence

- » **Q-Clamp**  
Single-handed and tool free sanitary Tri-Clamp
- » **High purity gaskets**  
Platinum-cured silicone gaskets
- » **BioClamp**  
Plastic Tri-Clamp
- » **High pressure hose**  
Platinum-cured braided hose
- » **BioBarb**  
Hose barb to Tri-Clamp adaptors
- » **BioValve**  
Variable flow control valve
- » **Bio Y**  
Equal barbed Y connectors
- » **BioEndCap**  
End caps with pull tab for connectors
- » **FlatBioEndCap**  
End caps for connectors

All BioPure components are suitable for sterilisation by autoclave and gamma irradiation, gamma stable, up to 40 kGy.

BioBarbs, FlatBioEndCaps, Bio Ys and BioEndCaps are all moulded from polypropylene.

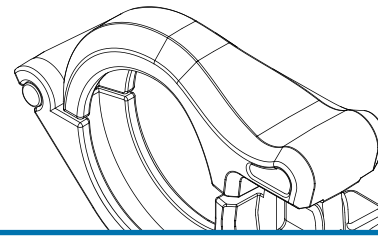
Q-Clamps, BioClamps and BioValves are all moulded from reinforced Nylon 66.

High purity gaskets are moulded from Platinum-cured silicone.

High pressure hose is extruded from Platinum-cured silicone with a polyester yarn braid.







## Process security; Quick and qualified

Patented single-handed and tool free sanitary Tri-Clamp, qualified for use in the biopharm industry.

- » Compatible with a wide range of connector geometries
- » Ratchet position identification can aid junction validation
- » Can be fitted with unique Q-Clamp tamper evident identification technology
- » Sleek, lightweight design to maximise operator comfort and eliminate any potential of damage to bags or gloves

Q-Clamp™ is supported by an industry leading validation package for non-wetted components and meets current industry requirements including ISO 10993: Parts 5, 6, 10, and 11, USP <88> & USP <87>. Q-Clamp has also been evaluated for extractables using a single solvent approach.



Q-Clamp introduces the first true tamper evident security solution for Tri-Clamp® connections. The additional component can also be used for identification through colour, allowing procedures to specify relevant areas of the process:

- » Can be applied pre or post clamp assembly
- » Tool free application and removal
- » Available in eight colours; blue, grey, orange, purple, green, red, yellow and clear

## High purity gaskets

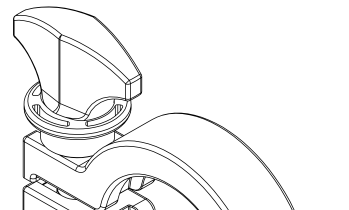


### Platinum-cured silicone gaskets

High purity Platinum-cured silicone gaskets precision engineered to achieve a smooth bore, contamination free fluid path under clamping compression. Available in a range of flanged and unflanged size options.

- » Post sterilised validation to current USP, EP and FDA standards
- » Extractables using a multi-solvent approach to BPOG guidelines
- » Laser etch LOT numbering enables full product traceability

## BioClamp



### Plastic Tri-Clamp

BioClamp® is a patented plastic union clamp, specifically designed to meet the needs of busy pharmaceutical and bioprocessing laboratories.

- » Preferred over stainless steel clamps to reduce the distortion on polymeric fittings when subjected to heat
- » Tamper evident feature available on the 1/2" to 4"
- » Manufactured from borosilicate reinforced nylon, the BioClamp is lightweight and easy to manipulate

# High pressure hose

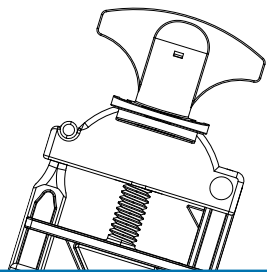


## Platinum-cured silicone braided hose

High pressure flexible hose with a continuously extruded Platinum-cured silicone core in single and double braid options.

- » Post sterilised validation to current USP, EP and FDA standards
- » Extractables using a multi-solvent approach to BPOG guidelines
- » Available in either 7.6m (25ft) and 15.2m (50ft) coils

# BioValve

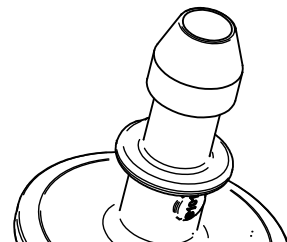


## Variable flow control valve

BioValve™ is a precision restriction flow controller and shut off valve that has been tested with clear and braid reinforced silicone tubing.

- » Profiled to minimise flow path turbulence
- » Thread pitch is calibrated to 2mm per turn, permitting controlled flow restriction
- » Can be applied to tubing already in situ

# BioBarb

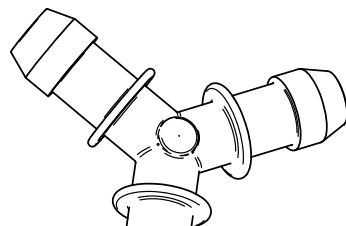


## Hose barb to Tri-Clamp adaptors

BioBarb™ incorporates an oversized barb design which facilitates an extremely strong adhesion to the tubing.

- » The full through bore diameter ensures smooth transition from tube to adaptor, reducing turbulence
- » The identical ID of barb and tubing allows complete drainage along an unimpeded flow path
- » Enhanced Tri-Clamp design reduces the risk of a seal failure

# Bio Y

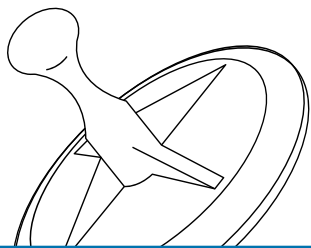


## Equal barbed Y connectors

Bio Y™ connectors are designed to meet the same high performance standards of our BioBarb adaptors.

- » Y junction splits the flow with minimum turbulence to optimise flow rate and back pressure
- » Identical ID of barb and tubing allows complete drainage along an unimpeded flow path
- » Size identification moulded into every component for ease of use

# BioEndCap

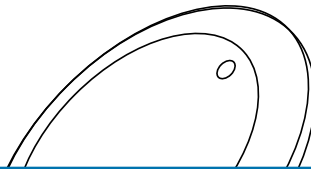


## End caps with pull-tab for connectors

BioEndCap™ is designed to terminate a disposable manifold until a new connection is to be made.

- » Uniquely constructed pull-tab ensures easy removal of the cap
- » Pull tab designed for strength but sufficient pliability to avoid damage to any contact materials
- » Provides a reliable, repeatable seal when used in combination with a gasket and clamp

# FlatBioEndCap



## End caps for connectors

FlatBioEndCap™ is designed to terminate a disposable manifold until a new connection is to be made.

- » Provides a reliable, repeatable seal when used in combination with a gasket and clamp
- » Traditional flat end cap design to directly replace stainless steel equivalent
- » Size identification moulded into every component for ease of use

## Q-Clamp and tamper evident cover

Part number	Pack size	Size	Max. operating pressure
1032-0075-0010	10 PCS	1/2" – 3/4" TC	7bar
1032-0075-0100	100 PCS	1/2" – 3/4" TC	7bar
1032-0150-0010	10 PCS	1" – 1 1/2" TC	7bar
1032-0150-0050	50 PCS	1" – 1 1/2" TC	7bar

Part number	Pack size	Size	Colour
1033-0001-0100	100 PCS	1/2" – 3/4" and 1" – 1 1/2" Q-Clamp	Natural
1033-0002-0100	100 PCS	1/2" – 3/4" and 1" – 1 1/2" Q-Clamp	Blue
1033-0003-0100	100 PCS	1/2" – 3/4" and 1" – 1 1/2" Q-Clamp	Grey
1033-0004-0100	100 PCS	1/2" – 3/4" and 1" – 1 1/2" Q-Clamp	Orange
1033-0005-0100	100 PCS	1/2" – 3/4" and 1" – 1 1/2" Q-Clamp	Yellow
1033-0006-0100	100 PCS	1/2" – 3/4" and 1" – 1 1/2" Q-Clamp	Red
1033-0007-0100	100 PCS	1/2" – 3/4" and 1" – 1 1/2" Q-Clamp	Green
1033-0008-0100	100 PCS	1/2" – 3/4" and 1" – 1 1/2" Q-Clamp	Purple

## Gaskets (flanged)

Part number	Pack size	Size	I.D x O.D
5101.0100.025	25	1"	0.877" x 1.984"
5101.0150.025	25	1 1/2"	1.377" x 1.984"
5101.0200.025	25	2"	1.875" x 2.520"
5101.0250.025	25	2 1/2"	2.374" x 3.050"
5101.0300.025	25	3"	2.878" x 3.583"
5101.0400.025	25	4"	3.843" x 4.658"
5101.0600.025	25	6"	5.822" x 6.570"
5101.0800.025	25	8"	7.822" x 8.570"

## Gaskets (unflanged)

Part number	Pack size	Size	I.D x O.D
5001.0050.025	25	1/2"	0.380" x 0.852"
5001.0075.025	25	3/4"	0.620" x 0.852"
5001.0100.025	25	1"	0.877" x 1.984"
5001.0150.025	25	1 1/2"	1.377" x 1.984"
5001.0200.025	25	2"	1.875" x 2.520"
5001.0250.025	25	2 1/2"	2.374" x 3.050"
5001.0300.025	25	3"	2.878" x 3.583"
5001.0400.025	25	4"	3.843" x 4.658"
5001.0600.025	25	6"	5.822" x 6.570"
5001.0800.025	25	8"	7.822" x 8.570"

## BioClamp

Part number	Pack size	Size	Max. operating pressure
NG075WHT	10 PCS	1/2" – 3/4" TC	10bar
NG075WHT-100	100 PCS	1/2" – 3/4" TC	10bar



BioClamp, continued

Part number	Pack size	Size	Max. operating pressure
NG150WHT	10 PCS	1" – 1 1/2" TC	10bar
NG150WHT-50	50 PCS	1" – 1 1/2" TC	10bar
NG200WHT	10 PCS	2" TC	10bar
NG200WHT-50	50 PCS	2" TC	10bar
NG250WHT	10 PCS	2 1/2" TC	10bar
NG250WHT-40	40 PCS	2 1/2" TC	10bar
NG300WHT	10 PCS	3" TC	10bar
NG300WHT-20	20 PCS	3" TC	10bar
NG400WHT	5 PCS	4" TC	10bar
NG400WHT-20	20 PCS	4" TC	10bar
NG600WHT	5 PCS	6" TC	6bar
NG800WHT	5 PCS	8" TC	6bar

Single braided hose

Part number	Length m (ft)	I.D x O.D mm (inch)	Min. burst pressure* bar (psi)
BPSHP0125-C	7.6 (25)	3.2 (0.125) x 8.8 (0.345)	48.3 (700)
BPSHP0188-C	7.6 (25)	4.8 (0.187) x 10.3 (0.407)	44.3 (650)
BPSHP0250-C	7.6 (25)	6.4 (0.250) x 12.4 (0.490)	43.1 (625)
BPSHP0375-C	7.6 (25)	9.6 (0.375) x 16.7 (0.658)	37.9 (550)
BPSHP0500-C	7.6 (25)	12.7 (0.500) x 20.3 (0.800)	34.5 (500)
BPSHP0625-C	7.6 (25)	15.9 (0.625) x 24.5 (0.965)	28.9 (420)
BPSHP0750-C	7.6 (25)	19.0 (0.750) x 27.9 (1.100)	24.1 (350)
BPSHP0875-C	7.6 (25)	22.2 (0.875) x 32.0 (1.260)	20.7 (300)
BPSHP1000-C	7.6 (25)	25.4 (1.00) x 34.5 (1.360)	15.1 (220)
BPSHP0125-D	15.2 (50)	3.2 (0.125) x 8.8 (0.345)	48.3 (700)
BPSHP0188-D	15.2 (50)	4.8 (0.187) x 10.3 (0.407)	44.3 (650)
BPSHP0250-D	15.2 (50)	6.4 (0.250) x 12.4 (0.490)	43.1 (625)
BPSHP0375-D	15.2 (50)	9.6 (0.375) x 16.7 (0.658)	37.9 (550)
BPSHP0500-D	15.2 (50)	12.7 (0.500) x 20.3 (0.800)	34.5 (500)
BPSHP0625-D	15.2 (50)	15.9 (0.625) x 24.5 (0.965)	28.9 (420)
BPSHP0750-D	15.2 (50)	19.0 (0.750) x 27.9 (1.100)	24.1 (350)
BPSHP0875-D	15.2 (50)	22.2 (0.875) x 32.0 (1.260)	20.7 (300)
BPSHP1000-D	15.2 (50)	25.4 (1.00) x 34.5 (1.360)	15.1 (220)

*\*at 20C/68F*

Double braided hose

Part number	Length m (ft)	I.D x O.D mm (inch)	Min. burst pressure* bar (psi)
BPDHP0500-C	7.6 (25)	12.7 (0.500) x 23.9 (0.940)	48.3 (700)
BPDHP0750-C	7.6 (25)	19.0 (0.750) x 31.8 (1.250)	44.3 (650)
BPDHP1000-C	7.6 (25)	25.4 (1.00) x 36.3 (1.430)	43.1 (325)
BPDHP0500-D	15.2 (50)	12.7 (0.500) x 23.9 (0.940)	37.9 (550)
BPDHP0750-D	15.2 (50)	19.0 (0.750) x 31.8 (1.250)	34.5 (500)
BPDHP1000-D	15.2 (50)	25.4 (1.00) x 36.3 (1.430)	28.9 (420)

*\*at 20C/68F*

BioBarb

Part number	Pack size	Size	Max. operating pressure
PPMTC0125BB	10 PCS	1/2" – 3/4" TC To 1/8" HB	4bar
PPMTC0250BB	10 PCS	1/2" – 3/4" TC To 1/4" HB	4bar
PPMTC0375BB	10 PCS	1/2" – 3/4" TC To 3/8" HB	4bar
PPMTC0500BB	10 PCS	1/2" – 3/4" TC To 1/2" HB	4bar
PPMTC0625BB	10 PCS	1/2" – 3/4" TC To 5/8" HB	4bar
PPSTC0125BB	10 PCS	1" – 1 1/2" TC To 1/8" HB	4bar
PPSTC0250BB	10 PCS	1" – 1 1/2" TC To 1/4" HB	4bar
PPSTC0375BB	10 PCS	1" – 1 1/2" TC To 3/8" HB	4bar
PPSTC0500BB	10 PCS	1" – 1 1/2" TC To 1/2" HB	4bar
PPSTC0625BB	10 PCS	1" – 1 1/2" TC To 5/8" HB	4bar
PPSTC0750BB	10 PCS	1" – 1 1/2" TC To 3/4" HB	4bar
PPSTC0875BB	10 PCS	1" – 1 1/2" TC To 7/8" HB	4bar
PPSTC1000BB	10 PCS	1" – 1 1/2" TC To 1" HB	4bar

BioValve

Part number	Pack size	Size	Max. operating pressure
BV0500NW	5 PCS	1/8" – 3/4" OD Tube	10bar
BV1000NW	5 PCS	1/2" – 1 1/4" OD Tube	10bar

Bio Y

Part number	Pack size	Size	Max. operating pressure
PP0250BY	10 PCS	1/4" HB	4bar
PP0375BY	10 PCS	3/8" HB	4bar
PP0500BY	10 PCS	1/2" HB	4bar
PP0625BY	10 PCS	5/8" HB	4bar
PP0750BY	10 PCS	3/4" HB	4bar
PP0875BY	10 PCS	7/8" HB	4bar
PP1000BY	10 PCS	1" HB	4bar

BioEndCap

Part number	Pack size	Size	Max. operating pressure
PEC-500-750	10 PCS	1/2" – 3/4" TC	4bar
PEC-100-150	10 PCS	1" – 1 1/2" TC	4bar

FlatBioEndCap

Part number	Pack size	Size	Max. operating pressure
PEC-050-075-FC	10 PCS	1/2" – 3/4" TC	4bar
PEC-100-150-FC	10 PCS	1" – 1 1/2" TC	4bar
PEC-200-FC	10 PCS	2" TC	4bar
PEC-250-FC	10 PCS	2 1/2" TC	4bar



Fluid Technology Group

## BIOTECHNOLOGY AND PHARMACEUTICAL SOLUTIONS



### Watson-Marlow Fluid Technology Group

Watson-Marlow Fluid Technology Group supports its customers locally through an extensive global network of direct sales operations and distributors

[wmftg.com/global](http://wmftg.com/global)



Disclaimer: The information contained in this document is believed to be correct but Watson-Marlow Limited accepts no liability for any errors it contains and reserves the right to alter specifications without notice. It is the users responsibility to ensure product suitability for use within their application. Watson-Marlow and puretu are registered trademarks of Watson-Marlow Limited. Bio Y, BioClamp, BioBarb, FlatBioEndCap, BioEndCap, BioValve and BioTube applicator are Trademarks of BioPure Technology Limited. Tri-Clamp is a registered trademark of Alfa Laval Corporate AB. Q-Clamp is used under licence.

A Spirax-Sarco Engineering Company