

# MasoSine Certa – C.O.P. options



## FEATURES AND BENEFITS

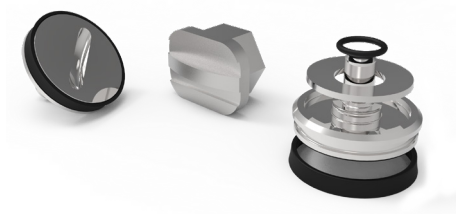
## MasoSine Process Pumps

- Clean Out of Place, COP, options to enable manual cleaning with your Certa Pump
- Simplified pump design perfect for frequent disassembly and assembly
- Retain all the benefits of Certa such as gentle product handling, ease of maintenance, high suction capability and flexibility



*Watson-Marlow...Innovation in Full Flow*

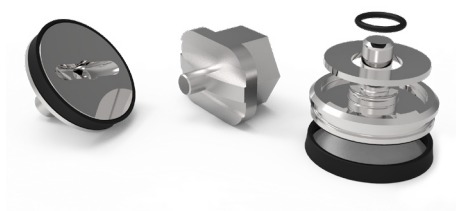
## LOCKING SCREW OPTIONS



### Standard Certa locking screw

- + Designed for CIP cleaning
- + Required for EHEDG and 3-A pumps
- Locking tool might cam out the slot when tightening or untightening
- Needs to be tightened with a torque wrench (see manual)

Pump size	Screw	Tool
Certa 100	C100-1100-10	TL-C100-003-10
Certa 200	C200-1100-10	TL-C200-003-10
Certa 250	C250-1100-10	TL-C250-003-10
Certa 300	C300-1100-10	TL-C300-003-10
Certa 400	C400-1100-10	TL-C400-003-10
Certa 500	C500-1100-10	TL-C500-003-10
Certa 600	C600-1100-10	TL-C600-003-10

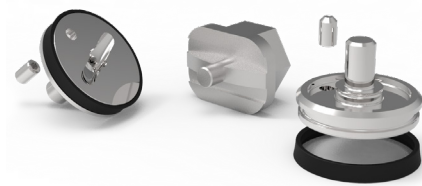


### Certa locking screw with additional guiding hole

- + Designed for frequent opening and closing procedures (limited CIP capabilities)
- + Avoid cam out of the locking tool
- Not suitable for EHEDG and 3-A pumps
- Needs to be tightened with a torque wrench (see manual)

Pump size	Screw	Tool
Certa 100	C100-1105-10	TL-C100-004-10
Certa 200	C200-1105-10	TL-C200-004-10
Certa 250	C250-1105-10	TL-C250-004-10
Certa 300	C300-1105-10	TL-C300-004-10
Certa 400	C400-1105-10	TL-C400-004-10
Certa 500	C500-1105-10	TL-C500-004-10
Certa 600	C600-1105-10	TL-C600-004-10

## LOCKING SCREW OPTIONS



### Certa locking screw with additional guiding hole and set screw

- + Designed for frequent opening and closing procedures
- + Avoid cam out of the locking tool
- + No torque wrench required
- Not suitable for EHEDG and 3-A pumps
- Not suitable for CIP cleaning
- Two tools are required

Pump size	Screw	Tool
Certa 200	C200-1106-10	TL-C200-004-10
Certa 250	C250-1106-10	TL-C250-004-10
Certa 300	C300-1106-10	TL-C300-004-10
Certa 400	C400-1106-10	TL-C400-004-10
Certa 500	C500-1106-10	TL-C500-004-10
Certa 600	C600-1106-10	TL-C600-004-10
Certa 600	C600-1100-10	TL-C600-003-10

## MECHANICAL SEAL OPTIONS



### Standard Certa mechanical seal

- + Seal faces can be exchanged through the front cover
- Not suitable for regular disassembly, the static seal face may become detached when the rotor is disassembled

Pump size	Mecahnical seal SiC / SiC EPDM	Mecahnical seal SiC / Ca EPDM	Mecahnical seal SiC / SiC FKM	Mecahnical seal SiC / Ca FKM
Certa 100	C100-0640-95EP	C100-0640-97EP	C100-0640-95	C100-0640-97
Certa 200	C200-0640-95EP	C200-0640-97EP	C200-0640-95	C200-0640-97
Certa 250	C250-0640-95EP	C250-0640-97EP	C250-0640-95	C250-0640-97
Certa 300	C300-0640-95EP	C300-0640-97EP	C300-0640-95	C300-0640-97
Certa 400	C500-0640-95EP	C500-0640-97EP	C400-0640-95	C400-0640-97
Certa 500	C500-0640-95EP	C500-0640-97EP	C500-0640-95	C500-0640-97
Certa 600	C600-0640-95EP	C600-0640-97EP	C600-0640-95	C600-0640-97



### Modified Certa mechanical seal

- + Suitable for frequent disassembly, the static seal face is fixed to the spring assembly and will not come apart when the rotor is disassembled
- + Spring assembly is secured with locking screws
- To replace the static seal face the back cover needs to be disassembled

Pump size	Mecahnical seal SiC / Ca EPDM	Mecahnical seal SiC / Ca FKM
Certa 100	C100-0650-97EP	C100-0650-97
Certa 200	C200-0650-97EP	C200-0650-97
Certa 250	C250-0650-97EP	C250-0650-97
Certa 300	C300-0650-97EP	C300-0650-97
Certa 400	C500-0650-97EP	C400-0650-97
Certa 500	C500-0650-97EP	C500-0650-97
Certa 600	C600-0650-97EP	C600-0650-97

## WING NUT OPTIONS



Wing nuts are available upon request for most common Pump sizes

Pump size	Wing nut
Certa 100	020P441.1304A2
Certa 200	020P441.1304A2
Certa 250	030P441.1304A2
Certa 300	030P441.1304A2
Certa 400	050P441.1304A3
Certa 500	N/A
Certa 600	N/A

## MATERIALS OF CONSTRUCTION

Component	Material
Locking screw	316L
Gaskets	EPDM or FKM
Seal faces	SiC / SiC or SiC / Ca
Wing nuts	304

Disclaimer: The information contained in this document is believed to be correct but Watson-Marlow Limited accepts no liability for any errors it contains and reserves the right to alter specifications without notice. It is the users responsibility to ensure product suitability for use within their application. Watson-Marlow, Sine and Mee Curves are registered trademarks of Watson-Marlow Limited.