

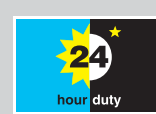
# 520Di/L IP31 and 520DiN/L IP66 high accuracy dispensers

# 500<sup>series</sup>

Flexicon Liquid Filling

## FEATURES AND BENEFITS

- Accurately dispenses to +/- 0.5 percent using 505L pumphead for minimal pulsation
- Single or twin channel
- Calibration by weight or by volume
- "Suck-back" facility eliminates drips at dose end
- Simple security protection code protects set functions. Comprehensive security protection can be incorporated to protect dispensing parameters and calibration values
- Up to 50 dispensing programs including dose parameters and calibration, can be stored in the memory with full name
- 505L pumphead has a twin offset track to provide smoothed using double tube elements or two individual tubes up to 9.6mm bore. One 505LX extension pumphead can be used to double the flow. To use two individual tubes, an additional 505LTC tube clamp set is required – 059.4001.000



*Watson-Marlow...Innovation in Full Flow*

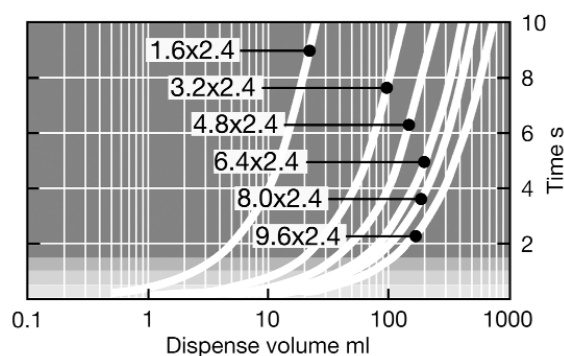
## TECHNICAL DATA

Pump drives	520Di	520DiN
Enclosure		
Ingress protection rating	IP31	IP66
Manual control		
Digital speed control with full calibration to display flow	•	•
Choice of flowrate or speed display	•	•
Numerical keypad for entry of speed	•	•
Remote control		
Run/Stop, direction change, auto/manual toggle, leak detector input (via contact closure or 5V TTL or 24V industrial logic)	•	•
Remote operation of Dosestart with instantaneous switch	•	•
Four programmable digital status outputs through 24V, 30W relays		•
Digital communication		
Digital network serial control	RS232	RS485
Security		
Security code to protect set-up, programs and dose parameters	•	•

## PERFORMANCE

520Di/L and 520DiN/L recommended dose sizes							
Maximum speed	Tube bore	1.6mm	3.2mm	4.8mm	6.4mm	8.0mm	9.6mm
350rpm	Minimum dose	0.9ml	4.5ml	8.5ml	14ml	18ml	25ml
	Maximum dose	15ml	75ml	150ml	250ml	300ml	400ml

520Di/L and 520DiN/L flow rates (ml/min)						
Tube bore	1.6mm	3.2mm	4.8mm	6.4mm	8.0mm	9.6mm
0.1 to 350rpm	0.04-150	0.23-800	0.42-1500	0.70-2500	0.90-3200	1.3-4400

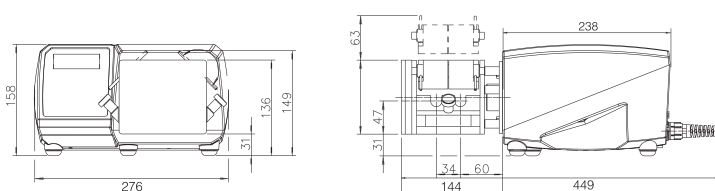


Dispense volume against time for the 520Di/L pump with a selection of tubes. Dispensing accuracy is indicated by the background shade

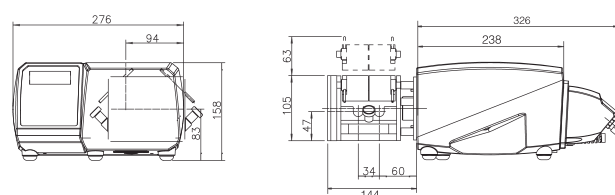
- within ±5.0%
- within ±2%
- within ±1.0%
- within ±0.5%

## DIMENSIONS

520Di/L



520DiN/L



All dimensions in mm

## TECHNICAL SPECIFICATIONS

Weight	11Kg
Operational Temperature range	5C to 40°C
Noise	<70dBb(A) at 1m
Standards	CE, cETLus
Supply	110V/230V, 1ph, 50/60Hz

## MATERIALS OF CONSTRUCTION

Component	Material
Drive casework	Pressure die-cast aluminium LM24
Casework coating	Alocrom pre-treatment, exterior grade polyester powder coat
Keypad	Polyester
Switch plate	Glass ABS plastic
Rear blanking plate	Stainless Steel 304
Gearbox nose	Aluminium LM24M
Drive shaft	Electroless nickel plated carbon steel
Track	Aluminium
Rotor	Aluminium
Rollers	Stainless steel
Springs, spindles	Stainless steel
Roller bearings	Carbon steel
Cradle	Aluminium alloy

## ORDER INFORMATION

520Di/L 520DiN/L ordering information			
Pump	Specification	Power Supply	Product code
520Di/L	0.1 to 350rpm	100-120V/220-240V 50/60Hz 1ph 100VA	050.7171.5L0*
520DiN/L	0.1 to 350rpm	100-120V/220-240V 50/60Hz 1ph 100VA	050.717N.5L0**

\*Supplied as 2.4 metre mains lead without plug. To specify American, European, United Kingdom, Australian, Argentinian or Swiss 2.8m mains lead please specify A, E, U, K, R or C respectively. Replace the last zero with the mains lead code. For example - 050.7131.10A is a 520S/R pump with American mains lead.

\*\*Supplied as 2.4 metre mains lead without plug. To specify a 2.8m American mains lead with a plug please replace the last zero with A. For example - 050.7131.10A is a 520S/R pump with American mains lead.

Tube ordering codes				
Double 'Y' tubing elements for 520Di/L and 520DiN/L dispenser				
Bore (mm)	Bioprene	Marprene	Pumpsil	STA-PURE® PCS
1.6	933.E016.K24	902.E016.K24	913.E016.K24	960.E016.K24
3.2	933.E032.K24	902.E032.K24	913.E032.K24	960.E032.K24
4.8	933.E048.K24	902.E048.K24	913.E048.K24	960.E048.K24
6.4	933.E064.K24	902.E064.K24	913.E064.K24	960.E064.K24
8.0	933.E080.K24	902.E080.K24	913.E080.K24	960.E080.K24
9.6	933.E096.K24	902.E096.K24	913.E096.K24	

Tube ordering codes			
2.4mm wall transfer tubing for 520Di/L and 520DiN/L dispenser			
Bore (mm)	Bioprene	Marprene	Pumpsil
1.6	933.0016.024	902.0016.024	913.A016.024
3.2	933.0032.024	902.0032.024	913.A032.024
4.8	933.0048.024	902.0048.024	913.A048.024
6.4	933.0064.024	902.0064.024	913.A064.024
8.0	933.0080.024	902.0080.024	913.A080.024
9.6	933.0096.024	902.0096.024	913.A096.024

All flow rates shown were obtained pumping water at 20C (68F) with zero suction and delivery heads. Watson-Marlow, Bioprene and Marprene are trademarks of Watson-Marlow Limited. Disclaimer: The information contained in this document is believed to be correct but Watson-Marlow Limited accepts no liability for any errors it contains, and reserves the right to alter specifications without notice. LoadSure is a trademark of Watson-Marlow Limited. © STA-PURE PFL and © STA-PURE PCS are registered trademarks of W.L Gore & Associates Inc. Please state the product code when ordering pumps and tubing.

**Flexicon**  
Liquid Filling

wmpg.com  
info@wmpg.co  
+44 (0) 1326 370370