

Pneumatic vacuum assist for Breidel 40-2100 pump series

ACCESSORIES

FEATURES AND BENEFITS

- Improves performance in high viscosity applications with low net positive suction head available (NPSHa)
- Aids in pump element restitution to increase suction capacity
- Maximizes pump capacity and improves pump element life in situations with difficult suction conditions

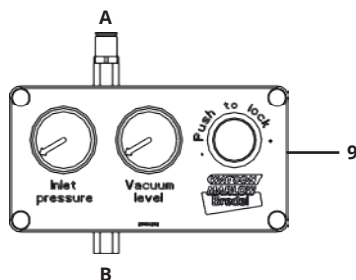
Consult your Breidel sales representative for advice on selecting an appropriate pneumatic vacuum assist unit for your application

Breidel Hose Pumps



CONSTRUCTION

A = Vacuum from pump housing
B = Air supply

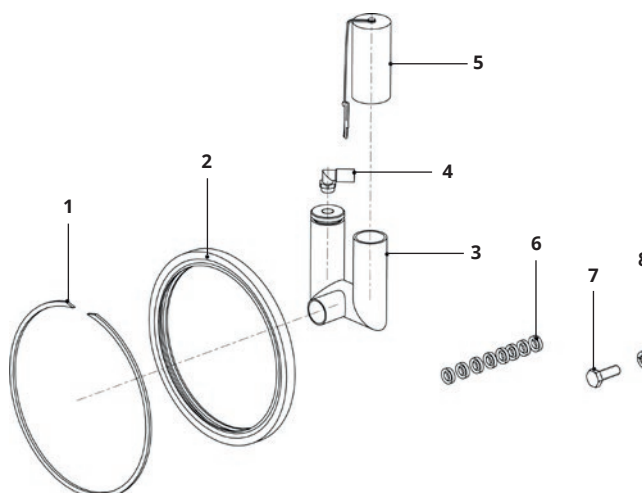


The vacuum assist unit consists of a manifold with inlet pressure gauge, vacuum gauge and pressure reducer.

The top port A must be connected to the T-piece air breather.
An air pressure line B is to be connected to the bottom of the manifold.

The vacuum assist system includes all the necessary parts to seal the pump housing for holding a vacuum. It can be ordered pre-fitted to a new pump or supplied as a retrofit parts kit for existing installations (parts shown here).

The amount of air required to run is
17.7 NI/min at 4 bar / 0.625 SCFM at 58psi.



	Description	Material
01	Retaining ring (x1)	Steel
02	Double lip vacuum seal for rotor hub (x1)	NBR
03	T piece air breather (x1)	AISI 316
04	Coupling (x1)	AISI 316
05	Air breather cap (x1)	AISI 316
06	Sealing rings for window cover (x8)	PA 6
07	Bolt (x8)	AISI 316
08	Spring washer (x8)	AISI 316
09	Pneumatic vacuum unit (x1)	PE

ORDERING CODES AND SELECTION OPTIONS

For ordering a pump with vacuum option fitted, please add to the pump description 'Fitted option: vacuum.

For replacing existing vacuum system please see the corresponding pump manual.

For upgrading existing pump with vacuum please contact your Breidel representative.

The information contained in this document is believed to be correct at the time of publication, but Watson-Marlow Breidel BV accepts no liability for any error it contains, and reserves the right to alter specifications without prior notice. All mentioned values in this document are values under controlled circumstances at our test bed. Actual flow rates achieved may vary because of changes in temperature, viscosity, inlet and discharge pressures and/or system configuration. APEX, DuCoNite, Bioprene and Breidel are registered trademarks.

Breidel
Hose Pumps

wmftg.com
+44 (0)1326 370 370
info@wmftg.com